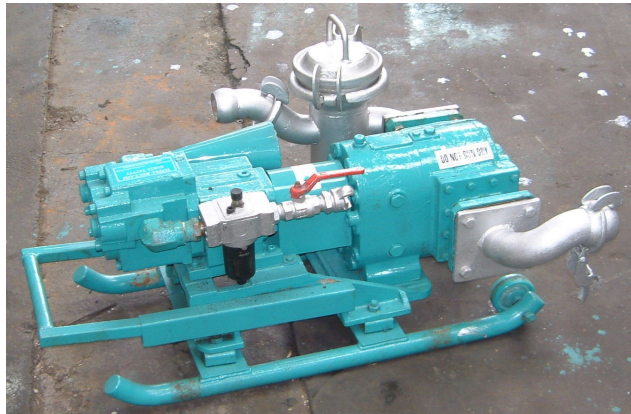




MUDDY 2P

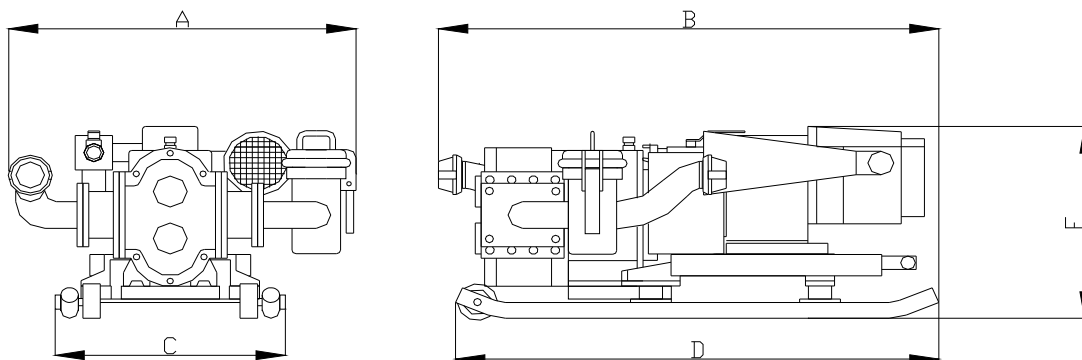


DESCRIPTION & CAPABILITIES

The Muddy 2P is a pneumatic vacuum pump with a high pressure output ideal for powering eductors. Also ideal for general rig clean up of heavy fluids, pumping out of deep tanks and cofferdams. Inlet and outlet fittings are 2" BAUER HK quick connections. The unit is fitted with an easy clean strainer that prevents particles larger than 25mm entering the pump head. A vacuum gauge is fitted to the pump suction, which gives a indication of pump head wear. The outlet is equipped with a pressure gauge. The entire unit is mounted on its own self contained base with an earthing strap fitted for earth bonding.

SPECIFICATION

Pump Type:	TRS positive displacement reclaim pump. Materials of construction: Cast steel, oil resistant elastomer (Nitrile/NBR/Buna N). Suitable for oil & salt water, not suitable for acidic fluids.			
Pneumatic Motor:	Max power 3KW .Dry lubricated/filtered. (Performance figures below for 3/4" airline)			
Power Requirements:	Air supply 6 bar 100cfm via 3/4" airline with Crowsfoot or McDonald fittings			
Vacuum:	25 inHg max. (Service required below 10inHg)			
Suction Head Max:	28'			
Delivery Head Max:	100'			
Solids Content:	<60%			
Max Particle Size:	20mm			
Hose Connection:	2" male BAUER quick fit hose couplings.			
Hoses:	TRS Delivery/Suction hoses rated to 10 bar. Antistatic			
Unit Weight:	135kgs			
Lubrication:	Pump/Gearbox: Texaco Rando HD32 or similar. Airmotor: Marvel airtool oil or similar			
Performance:	m3/hr	bbf/m	Notes	
Flow rate at 2 bar:	15	1.8	2 bar = Delivery head pressure.	
Flow rate at 10 bar:	6	0.7	10 bar = Max operating pressure	
Dimensions:	A	B	C	E
	700 mm	750 mm	375 mm	770 mm
				D
				370 mm



A complete range of TRS pumps are available with outputs to suit a wide range of applications.

e.mail: RM_Trystems@Btinternet.com, website: www.totalreclaimsystems.com