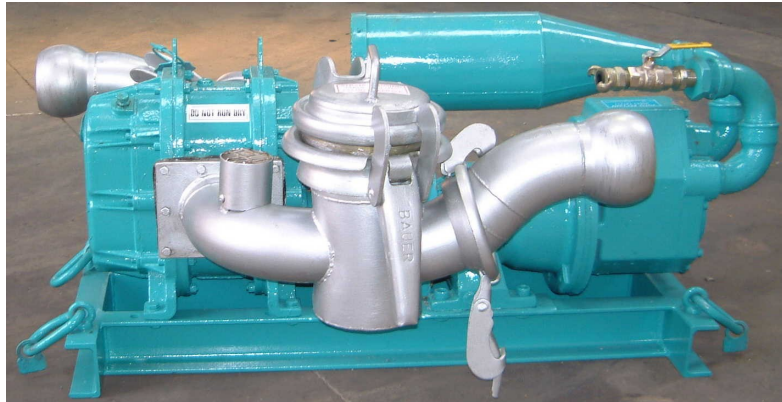




RECLAIM P (13/300)



DESCRIPTION & CAPABILITIES

The Reclaim P is a pneumatic vacuum pump suitable for pumping heavy fluids with solids content. Ideal for emergency cuttings transfer ,pit cleaning, sludge removal or as a short service vacuum pump. Inlet and outlet fittings are 4" BAUER HK quick connections .The unit is fitted with an easy clean strainer that prevents particles larger than 25mm entering the pump head.

A vacuum gauge is fitted to the pump suction, which gives a indication of pump head wear. The outlet is equipped with a pressure gauge.

The entire unit is mounted on its own self contained base with an earthing strap fitted for earth bonding.

SPECIFICATION

Pump Type:	TRS positive displacement reclaim pump. Materials of construction: Cast steel, oil resistant elastomer (Nitrile/NBR/Buna N). Suitable for oil & salt water, not suitable for acidic fluids.				
Pneumatic Motor:	Max power 13 kw .Dry lubricated/filtered. (Performance figures below for 3/4" airline)				
Power Requirements:	Air supply 6 bar 250cfm via 3/4" airline with Crowsfoot or McDonald fittings.				
Pump Head Speed:	300 rpm				
Vacuum:	28 inHg max. (Service required below 10inHg)				
Suction Head Max:	25'				
Delivery Head Max:	120'				
Solids Content:	<60%				
Max Particle Size:	25mm				
Hose Connection:	4" male BAUER quick fit hose couplings.				
Hoses:	TRS Delivery/Suction hoses rated to 10 bar. Antistatic				
Unit Weight:	260kgs				
Lubrication:	Pump/Gearbox :Texaco Rando HD32 or similar. Airmotor : Marvel airtool oil or similar.				
Performance:	m3/hr	bbl/m	Notes		
Flow rate at 2 bar:	30	3.5	2 bar = Delivery head pressure.		
Flow rate at 5 bar:	26	3.1	5 bar = Max operating pressure		
Dimensions:	A	B	C	D	E
	870 mm	1270 mm	440 mm	1050 mm	570 mm

