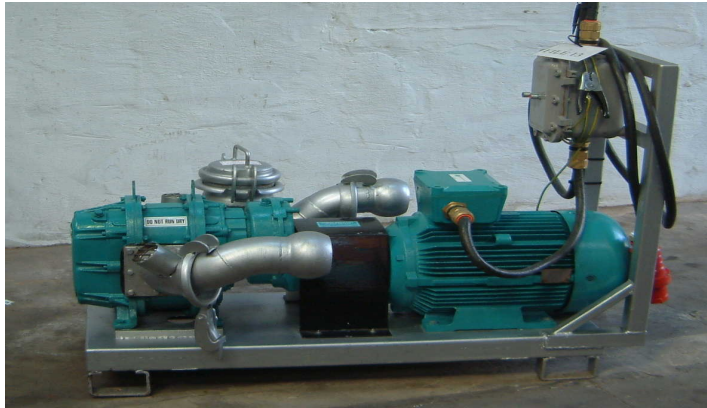




RECLAIM VE (18/300)



DESCRIPTION & CAPABILITIES

The Reclaim VE is an electrically powered vacuum pump suitable for high pressure, high volume applications. The pump is equipped with durable lobes and is suited to cuttings transfer or for powering single nozzle wash heads.

Inlet and outlet fittings are 4" BAUER HK quick connections. The unit is fitted with an easy clean strainer that prevents particles larger than 25mm entering the pump head.

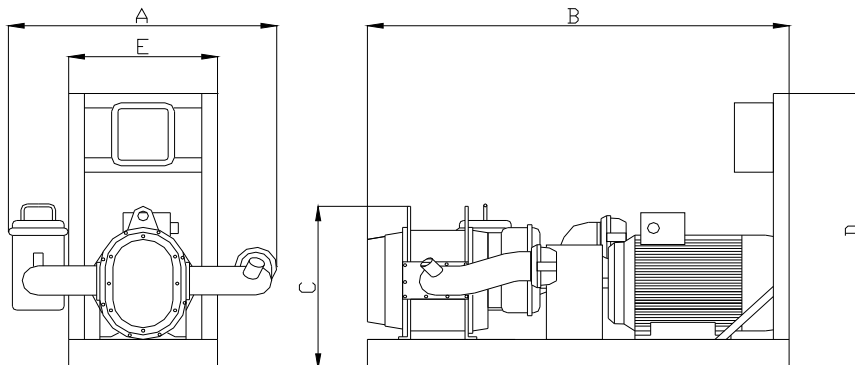
A vacuum gauge is fitted to the pump suction, which gives a indication of pump head wear. The outlet is equipped with a pressure gauge.

The entire unit is mounted on its own self contained base with an earthing strap fitted for earth bonding.

SPECIFICATION

Pump Type:	TRS positive displacement reclaim pump. Materials of construction: Cast steel, oil resistant elastomer (Nitrile/NBR/Buna N). Suitable for oil & salt water, not suitable for acidic fluids.			
Electric Motor:	18KW Fitted with DOL starter, flameproof E.Exd IIA, IIB dual rated 380/440v ,50/60Hz T4 TEFV IP55			
Pump Head Speed:	300 rpm	alternative 540rpm		
Vacuum:	28 inHg max. (Service required below 10inHg)			
Suction Head Max:	25'			
Delivery Head Max:	180'			
Solids Content:	<60%			
Max Particle Size:	25mm			
Hose Connection:	4" male BAUER quick fit hose couplings.- special fittings are required for HP operation			
Hoses:	TRS Delivery/Suction hoses rated to 10 bar. Antistatic			
Unit Weight:	460kgs			
Lubrication:	Pump/Gearbox: Texaco Rando HD32 or similar.			
Performance:	m3/hr	bbl/m	Notes	alternative head speed
Flow rate at 2 bar:	66	7.7	2 bar = Delivery head pressure.	90m3 / hr
Flow rate at 12 bar:	50	5.9	12 bar = Max operating pressure	TBA
Dimensions:	A	B	C	D
	850 mm	1340 mm	570 mm	955 mm
				E
				473 mm

Note: For high pressure operation a diversion loop and pressure relief valve is fitted to the pump discharge



A complete range of TRS pumps are available with outputs to suit a wide range of applications.

